

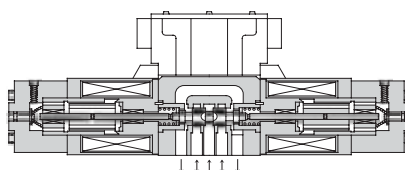
## Proportional Electro-Hydraulic Directional and Flow Control Valves

These valves incorporate two control functions - flow and direction - which simplify the hydraulic circuit composition and therefore the cost of the system is reduced.

### Specifications

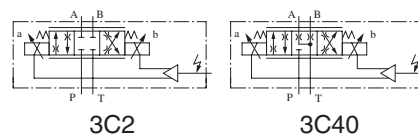
Model Numbers		EHDFG-01	EHDFG-03
Description			
Max. Operating Pressure	MPa (PSI)	24.5 (3550)	24.5 (3550)
Max. Tank Line Back Pres.	MPa (PSI)	7 (1020)	7 (1020)
Rated Flow	L/min (U.S.GPM) [Valve $\Delta P$ 6.9 MPa (1000 PSI)]	30 (7.92)	60 (15.9)
Hysteresis		5% or less	
Repeatability		1%★ or less	
Frequency Response		20 Hz (-90 deg.)	17 Hz (-90 deg.)
Coil Resistance		10.5 $\Omega$	8.0 $\Omega$
Supply Electric Power		24 V DC (21 to 28 V DC Included Ripple)	
Input Voltage	By Controlling Variable Resistance (Using of Power from Amp.)	1 - 2 k $\Omega$ Volume Range	
	By Controlling Voltage (Using of Power outside Amp.)	0 - -5 V for SOL a 0 - +5 V for SOL b	
Input Impedance		10 k $\Omega$	10 k $\Omega$
Power Input (Max.)		40 W	45 W
Ambient Temperature		0 - 50°C (32 - 122°F) (With Circulated Air)	

★ The repeatability of the valves is obtained by having it tested independently on the conditions similar to its original testing.

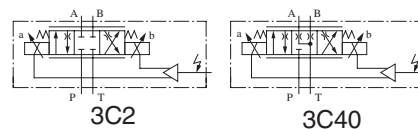


### Graphic Symbols

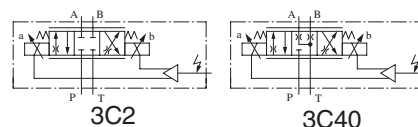
#### ● Metre-in • Metre-out Control



#### ● Metre-out Control



#### ● Metre-in Control



### Model Number Designation

F-	EHDF	G	-01	-30	-3C2	-E	-30
Special Seals	Series Number	Type of Mounting	Valve Size	Rated Flow L/min (U.S.GPM)	Spool Type★	Direction of Flow	Design Number
<b>F:</b> Special Seals for Phosphate Ester Type Fluid (Omit if not required)	<b>EHDF:</b> Proportional Electro-Hydraulic Directional and Flow Control Valve	<b>G:</b> Sub-plate Mounting	<b>01</b>	<b>30:</b> 30 (7.92)	<b>3C2</b>	<b>XY</b> : Metre-in • Metre-out <b>X</b> : Metre-in <b>Y</b> : Metre-out	<b>30</b>
			<b>03</b>	<b>60:</b> 60 (15.9)	<b>3C40</b>		<b>30</b>

★ Spool type shown in the column is for the centre position.